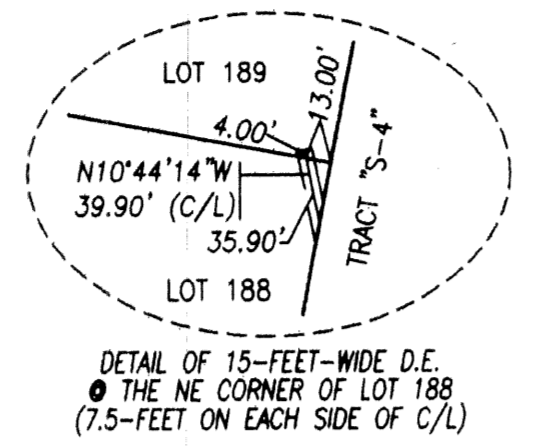
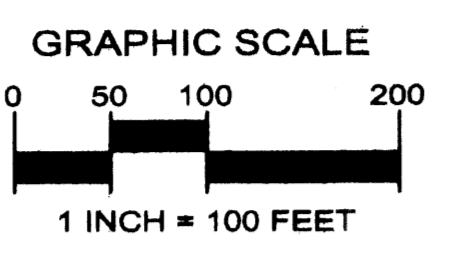


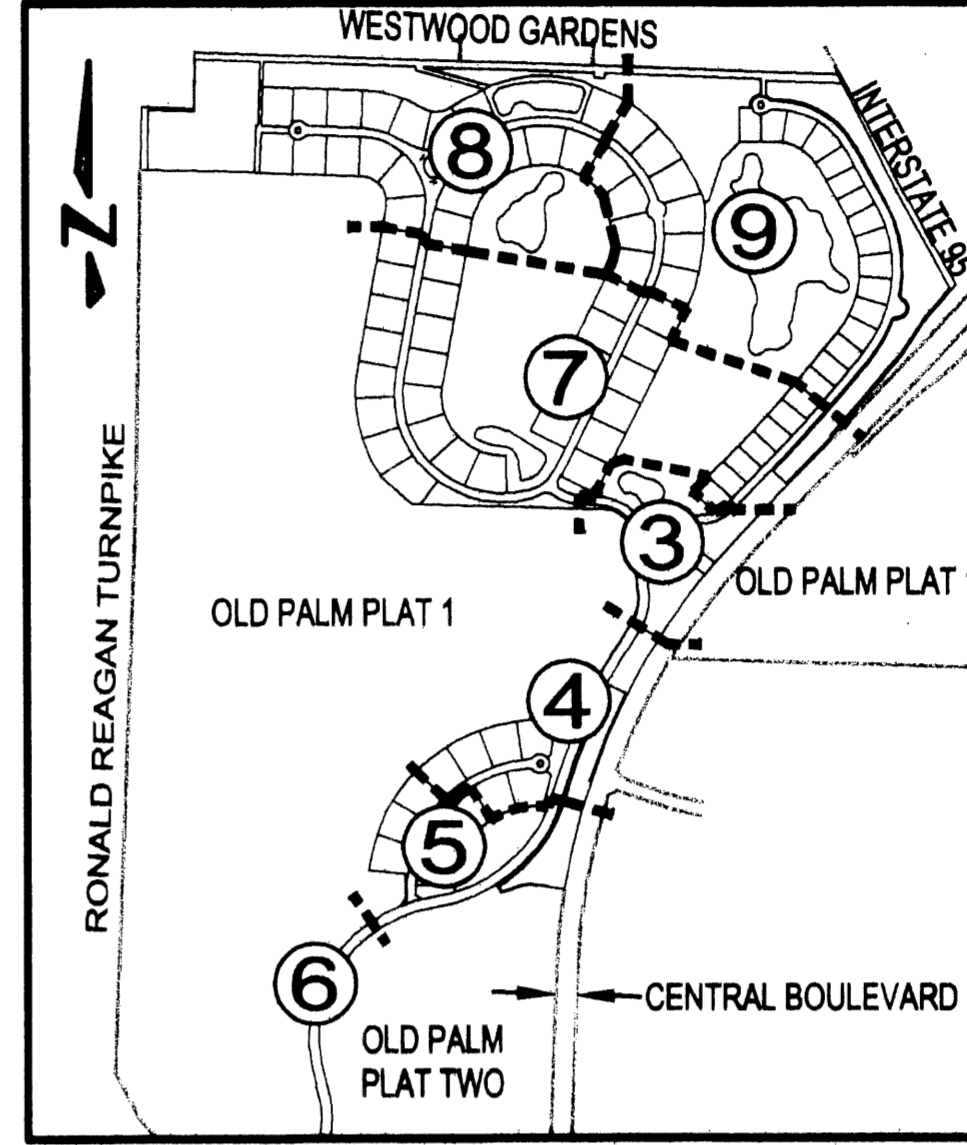
OLD PALM PLAT THREE
 A REPLAT OF A PORTION OF PARCEL 1, OLD PALM PLAT 1 AS RECORDED IN
 PLAT BOOK 96, PAGES 31 THROUGH 34, PUBLIC RECORDS OF PALM BEACH COUNTY, FLORIDA
 LYING IN SECTION 2, TOWNSHIP 42 SOUTH, RANGE 42 EAST, AND SECTION 35, TOWNSHIP 41 SOUTH, RANGE 42 EAST,
 CITY OF PALM BEACH GARDENS, PALM BEACH COUNTY, FLORIDA
 SHEET No.7 OF 10 SEPTEMBER 2003



SYMBOLS LEGEND

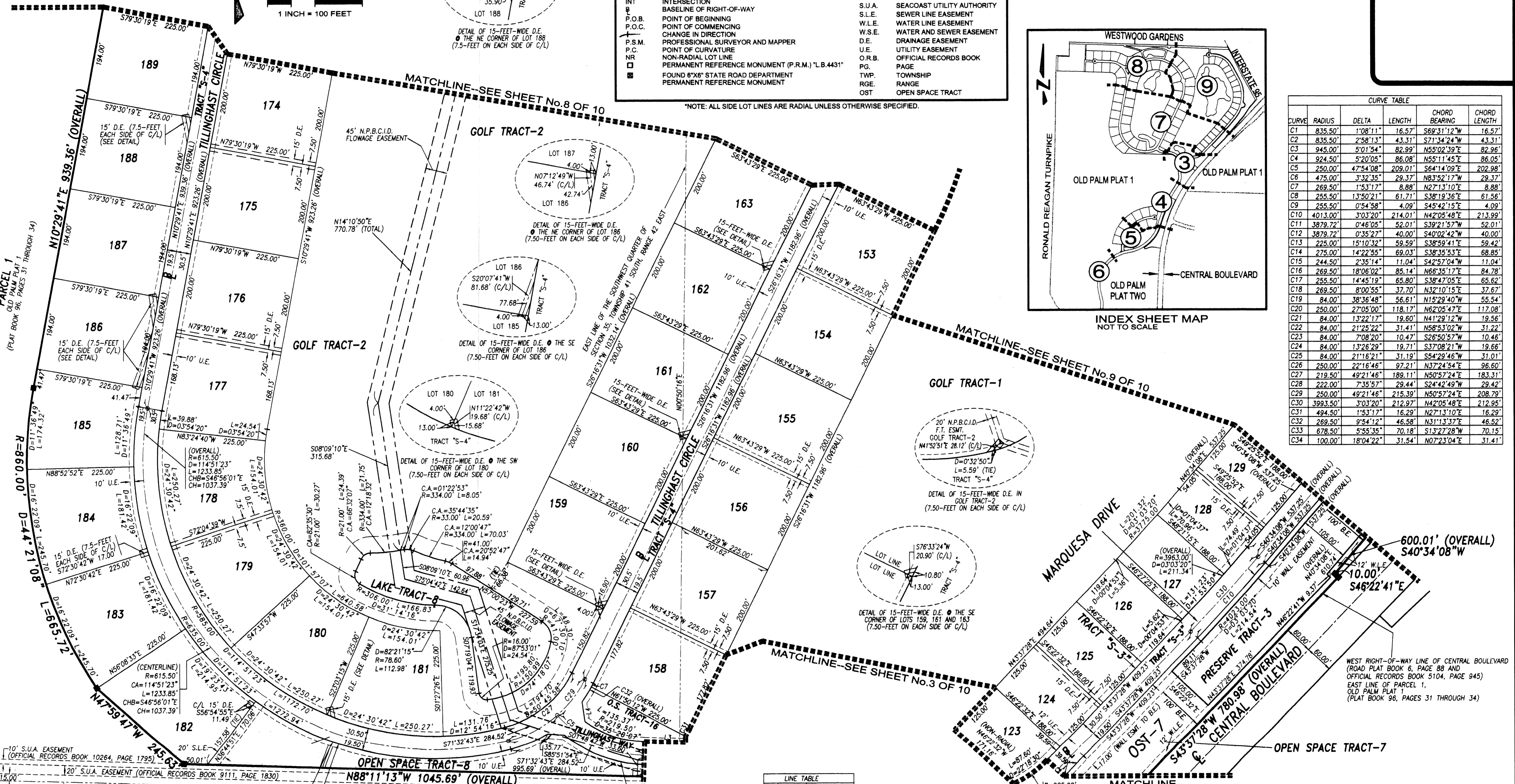
■	SET PERMANENT REFERENCE MONUMENT (P.R.M.) "L.B.4897"	CH	CHORD DISTANCE
●	PERMANENT CONTROL POINT (P.C.P.)	CHB	CHORD BEARING
NPBCID	NORTHERN PALM BEACH COUNTY IMPROVEMENT DISTRICT	S.U.A.	SEACOAST UTILITY AUTHORITY
R	RADIUS	S.L.E.	SEWER LINE EASEMENT
D	CENTRAL ANGLE	W.L.E.	WATER LINE EASEMENT
L	ARC LENGTH	W.S.E.	WATER AND SEWER EASEMENT
INT	INTERSECTION	D.E.	DRAINAGE EASEMENT
□	BASELINE OF RIGHT-OF-WAY	U.E.	UTILITY EASEMENT
P.O.B.	POINT OF BEGINNING	O.R.B.	OFFICIAL RECORDS BOOK
P.O.C.	POINT OF COMMENCING	PG.	PAGE
+	CHANGE IN DIRECTION	TWP.	TOWNSHIP
P.S.M.	PROFESSIONAL SURVEYOR AND MAPPER	RGE.	RANGE
P.C.	POINT OF CURVATURE	OST	OPEN SPACE TRACT
NR	NON-RADIAL LOT LINE		
□	PERMANENT REFERENCE MONUMENT (P.R.M.) "L.B.4431"		
□	FOUND 6"x6" STATE ROAD DEPARTMENT PERMANENT REFERENCE MONUMENT		

*NOTE: ALL SIDE LOT LINES ARE RADIAL UNLESS OTHERWISE SPECIFIED.



CURVE TABLE

CURVE	RADIUS	DELTA	LENGTH	CHORD BEARING	CHORD LENGTH
C1	835.50'	1'08"11"	16.57'	S69°31'12"W	16.57'
C2	835.50'	2'58"13"	43.31'	S71°34'24"W	43.31'
C3	945.00'	5'01"54"	82.89'	N55°02'39"E	82.96'
C4	924.50'	5'20"05"	86.08'	N55°11'45"E	86.05'
C5	250.00'	4'75"08"	209.01'	S64°14'09"E	202.98'
C6	475.00'	3'32"35"	29.37'	N83°52'17"W	29.37'
C7	269.50'	1'53"17"	8.88'	N27°13'10"E	8.88'
C8	255.50'	1'35"02"	61.71'	S38°19'36"E	61.56'
C9	255.50'	0'54"58"	4.09'	S45°42'15"E	4.09'
C10	4013.00'	3'03"20"	214.01'	N42°05'48"E	213.99'
C11	3879.72'	0'46"05"	52.01'	S39°21'57"W	52.01'
C12	3879.72'	0'35"27"	40.00'	S40°02'42"W	40.00'
C13	225.00'	15'10"32"	59.59'	S38°59'41"E	59.42'
C14	275.00'	14'22"55"	69.03'	S38°35'53"E	68.85'
C15	244.50'	2'35"14"	11.04'	S42°57'04"W	11.04'
C16	269.50'	18'06"02"	85.14'	N66°35'17"E	84.78'
C17	255.50'	14'45"19"	65.80'	S38°47'05"E	65.62'
C18	269.50'	8'00"55"	37.70'	N32°10'15"E	37.67'
C19	84.00'	38'36"48"	56.61'	N15°29'40"W	55.54'
C20	250.00'	2'05"00"	118.17'	N62°05'47"E	117.08'
C21	84.00'	13'22"17"	19.60'	N41°29'12"W	19.56'
C22	84.00'	21'25"22"	31.41'	N58°53'02"W	31.22'
C23	84.00'	7'08"20"	10.47'	S26°50'57"W	10.46'
C24	84.00'	13'26"29"	19.71'	S37°08'21"W	19.66'
C25	84.00'	21'16"21"	31.19'	S54°29'46"W	31.01'
C26	250.00'	22'16"46"	97.21'	S24°42'49"W	96.60'
C27	219.50'	49'21"46"	189.11'	N50°57'24"E	183.31'
C28	222.00'	7'35"57"	29.44'	S24°42'49"W	29.42'
C29	250.00'	49'21"46"	215.39'	N50°57'24"E	208.79'
C30	3993.50'	3'03"20"	212.97'	N42°05'48"E	212.95'
C31	494.50'	1'53"17"	16.29'	N27°13'10"E	16.29'
C32	269.50'	9'54"12"	46.58'	N31°13'37"E	46.52'
C33	678.50'	5'55"35"	70.18'	S13°27'28"W	70.15'
C34	100.00'	18'04"22"	31.54'	N07°23'04"E	31.41'



LINE TABLE

LINE	LENGTH	BEARING
L1	36.68'	S32°24'09"W
L2	31.89'	N32°08'13"W
L3	94.28'	S88°11'13"E
L4	42.07'	S08°20'12"E

Keshavarz & Associates, Inc.
 CONSULTING ENGINEERS - SURVEYORS
 711 N. Dixie Highway, Suite 201
 West Palm Beach, Florida 33401
 Tel: (561) 689-8600 Fax: (561) 689-7476 LB 4897
 THIS INSTRUMENT WAS PREPARED BY MANUEL A. GUTIERREZ, PSM
 PROFESSIONAL SURVEYOR AND MAPPER NO. 4102
 IN THE OFFICES OF KESHAVARZ & ASSOCIATES, INC.

PARCEL 1
 OLD PALM PLAT 1 - (PLAT BOOK 96, PAGES 31 THROUGH 34)